



Life is  
*better* here.

THE  
CHATEAU  
GIRARDEAU

2026

A woman in a purple uniform, likely a staff member, is smiling and interacting with elderly residents at a dining table. The scene is set in a bright, modern dining area with a light-colored sofa and a blue armchair in the background. The woman is standing and leaning over the table, while the residents are seated and eating. The overall atmosphere is warm and welcoming.

# *Welcome Home*

---

Inspired Living for  
Every Stage of Retirement



Nestled on 40 beautiful acres in charming Cape Girardeau, Missouri, The Chateau Girardeau offers a maintenance-free community with everything you need to experience retirement the way it should be.

## *A Message from Jimmy*



*Dear Future Residents, Families, and Friends,*

*It is my privilege to extend heartfelt appreciation for the trust you place in us every day. Our aim has always been to create a safe, supportive, and vibrant environment where our residents can thrive. As always, our goal is to enhance the quality of life for everyone who calls The Chateau Girardeau home.*

*Whether through wellness programs, enriching activities, or facility improvements, our dedicated team remains committed to providing exceptional care and service inspired by our Christian values.*

*We're truly grateful for your interest in becoming part of The Chateau community.*

*- Jimmy Wilferth, President & CEO*

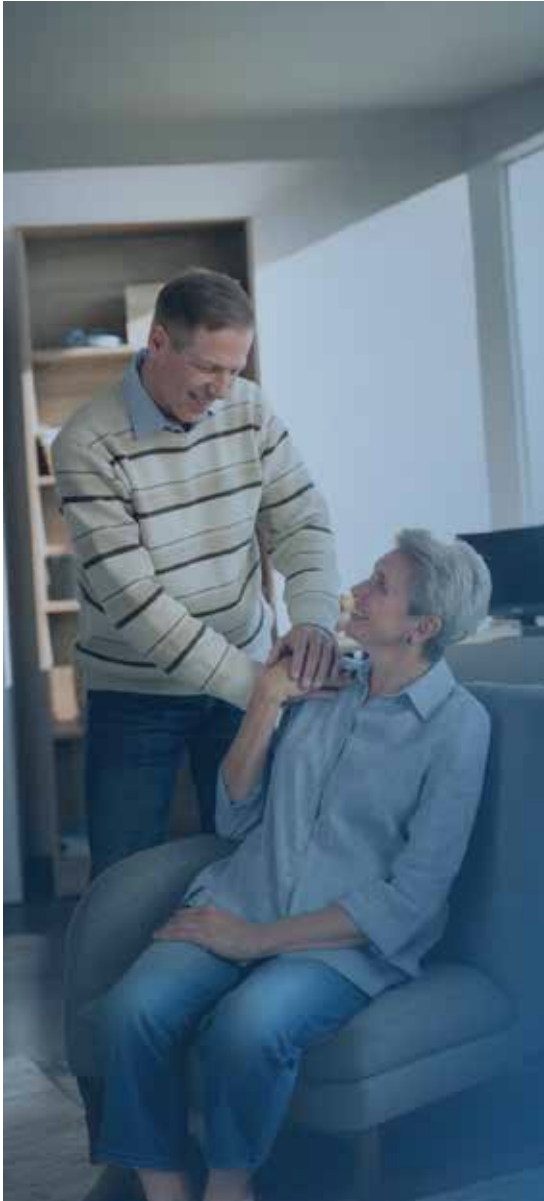
# Continuum of Care

The Chateau Girardeau offers a full continuum of care under one roof. No matter how your needs change as you age, you can feel confident that you'll always have access to the resources you need.



## *Our Mission*

Cape Retirement Community, Inc. ministers to area seniors' needs as a premier provider of housing, healthcare, and wellness services that reflect our Christian values.



### Independent Living

Live independently in a customizable home — without the hassle of maintenance.



### Independent Living

Enjoy carefree living in a personalized apartment with full campus access and amenities.



**THE TERRACES**  
THE CHATEAU GIRARDEAU

**Assisted Living**

Stay independent with adaptable support tailored to your daily needs.



**THE MEADOWS**  
THE CHATEAU GIRARDEAU

**Memory Care**

Montessori-based memory care that supports wellness through engaging spaces and activities.



**THE GARDENS**  
THE CHATEAU GIRARDEAU

**Skilled Nursing & Rehabilitation**

Expert nursing and rehab care that helps residents thrive — short- or long-term.



## *Campus Amenities*

*At The Chateau Girardeau, we believe that there's no reason for your retirement to be boring. That's why our goal is to provide everyday conveniences and enriching experiences for a vibrant, fulfilling lifestyle.*



Our residents can participate in educational classes, hobby-based clubs, fitness programs, creative workshops, and spiritual services. We also host regular social events, themed parties, musical performances, and holiday celebrations, creating plenty of ways to connect with neighbors and build lasting friendships.

At The Chateau Girardeau, your interests and well-being are always at the heart of what we do — so you can continue living life on your terms.



## *Wellness*

# *Life is Better When You're Living Well*

Your golden years are a great time to indulge, but we also know how important it is to keep your bodies and minds sharp! Whether you want to maintain your current health, are looking to meet specific goals, or need the extra support of therapy, The Chateau Girardeau can help.

Opportunities such as yoga, brain fitness, and speaker sessions — plus a variety of daily exercise and strength-building classes — are available to our residents.

You can also get plenty of fresh air and sunshine with multiple courtyards and patios, plus our accessible Wildflower Walking Trail.



## *Dining Services*

# *Life is Better with a Full Belly*

Taste the good life at The Chateau Girardeau! We're proud to offer multiple dining options planned by a world-class culinary services team that includes an executive chef, a sous chef, a pastry chef, and a registered dietitian.



### Multiple Dining Rooms

We offer a flexible dining plan, so residents can choose what meals fit into their day. Socialize and dine with friends in one of our formal or casual dining rooms, or visit the Bistro on the ground floor to grab something quick!



### The Bar

Join your fellow Independent Living residents for a weekly social hour, complete with a full-service bar and appetizers.



## *Clubs and Activities*

# *Life is Better When You're Having Fun with Friends*

Make new friends with common interests, learn new skills, or discover a new talent. At The Chateau Girardeau, our calendar is full of educational, active, social, and spiritual activities for residents to enjoy.



*Some of our clubs include:*

- Book clubs
- Bible study and devotionals
- Card game groups
- Resident councils
- Crafting clubs
- Walking club

## *Living with Pets*

# *Life is Better with Furry Friends*

We understand that pets are part of the family, which is why The Chateau Girardeau is proud to be a pet-friendly community.

Our campus welcomes up to two pets per Independent Living resident — whether dogs, cats, or birds — so you can share your home with the companions that bring you comfort, joy, and companionship.

Our spacious grounds and walking paths make it easy for you and your pets to stay active and enjoy the fresh air together.

Because here, we know home doesn't feel complete without your pets by your side.



*Everything  
you've ever  
wanted  
out of  
retirement!*

Spend your days sipping drinks on your backyard patio, whipping up delicious meals in your fully equipped kitchen, and hosting family and friends in your stunning living and dining rooms.

These large single-dwelling residences offer two bedrooms, two bathrooms, and a two-car garage.



*Independent Living.  
Fully Customized.*

- 1,500 – 2,400 SqFt
- Step-in showers
- In-home laundry
- Stainless steel appliances
- Screened-in porch optional

You can also rest easy knowing you're protected by a home security system and The Chateau Girardeau's emergency response system.

## *Your Chateau.*

*Life is Better when it's tailored to your retirement dreams.*



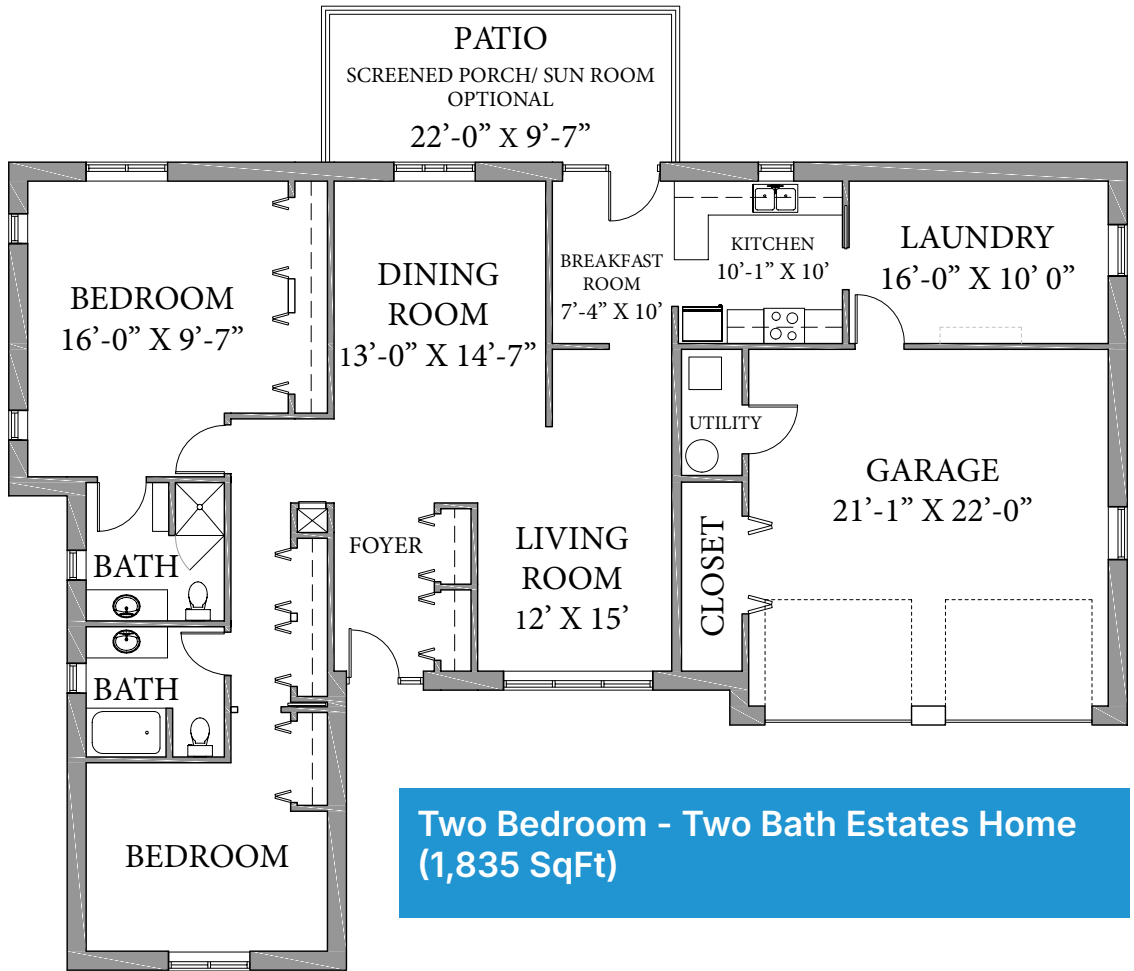
## *Spend your time relaxing, not working.*

When you live in The Estates, the boring stuff is handled for you. Enjoy housekeeping service every two weeks, as well as maintenance service, including lawn care and snow removal.

Living at The Estates doesn't just give you the retirement home of your dreams — it also offers access

to the entire Chateau Girardeau campus and all of the community events and activities.

You can take full advantage of every amenity, including full-service dining, shuttle services, concierge service, and more!



<i>Residence</i>	<i>Guaranteed Lifetime Care Contract</i>	<i>50% Refundable Agreement</i>
1470-1699 SqFt	\$238,875	\$322,480
1700-1799 SqFt	\$250,425	\$338,075
1800-1899 SqFt	\$262,500	\$354,375
1900-1999 SqFt	\$273,525	\$369,260
2000-2099 SqFt	\$285,600	\$385,560
2100-2199 SqFt	\$297,150	\$401,155
2200+ SqFt	\$309,750	\$418,165

**Monthly Service Fee of \$1,570 applicable\***

\*Add \$200 monthly for a second occupant

*Notes*

---



---



---



---



---



---



---



  
**THE ESTATES**  
THE CHATEAU GIRARDEAU

Stay in control of your living arrangements while enjoying a stress-free, maintenance-free lifestyle.



"Life is better here — in a well-maintained, highly respected senior living community where you're free to join in activities if you choose, and free from the daily chores of homeownership like maintenance, lawn care, and housekeeping."

- Jo and Neal T.

## *Live the sweet life at The Suites!*

When you live in one of our premier Independent Living apartments, you can enjoy all the privacy of your own incredible space while having The Chateau Girardeau's top-notch amenities right at your fingertips.

An apartment at The Suites is the perfect recipe for a stress-free retirement.

These stunning units come in multiple one- and two-bedroom layout options, and some floorplans even come with a balcony!



### *The Suite Life. On Your Terms.*

- 562 - 1,325 SqFt
- Four available floor plans
- Full-size kitchen appliances
- Walk-in closet space
- Optional covered parking

Opt for a Lifetime Care Contract and choose your own finishes. Pick out your appliances. Paint the walls. Make your home YOURS in any way you'd like!

# Your Chateau.

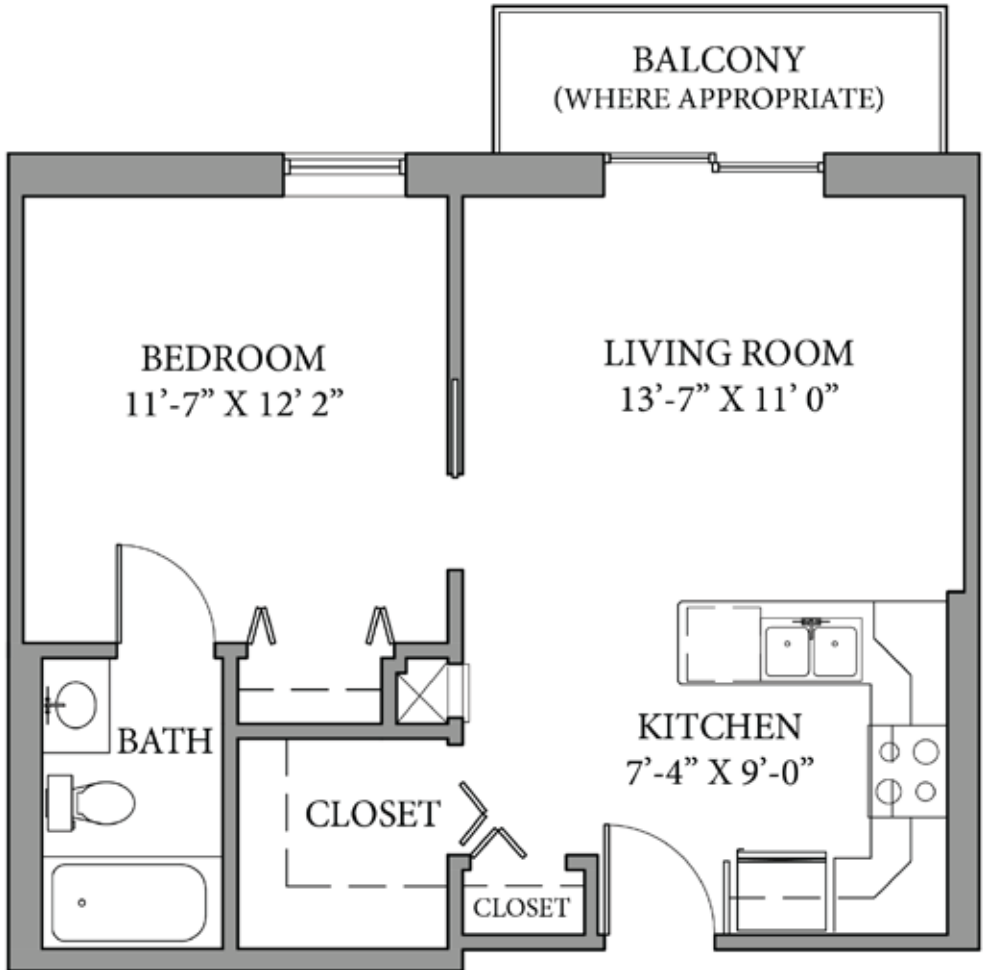
*Life is Better when it's  
all-inclusive.*



## *Retirement should be fun, not stressful!*

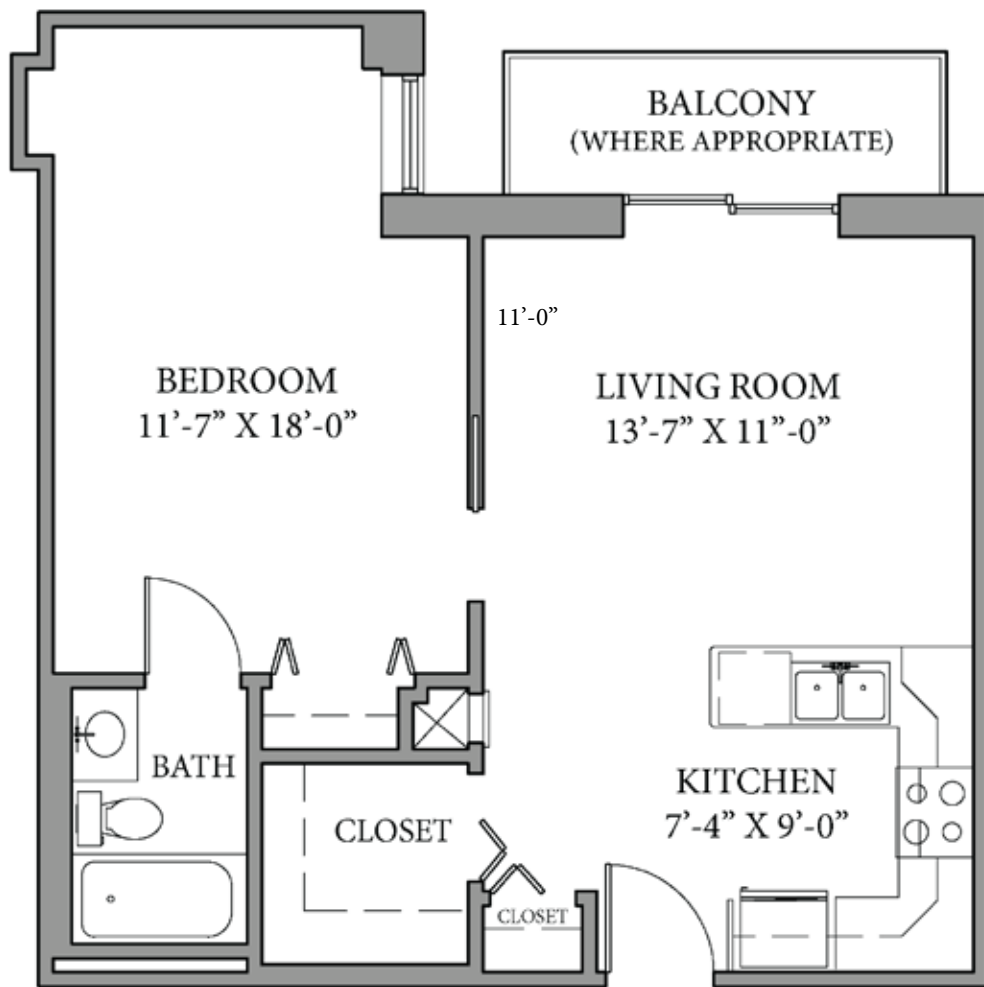
When you live in The Suites, you won't have to worry about anything — we'll handle housekeeping and maintenance, and we even offer flat linen laundry service. Rest easy with 24/7 security, on-campus nurses, and a fast emergency response system.

And because you'll be living on campus, it'll be easy to take full advantage of all of our amenities, including full-service dining, concierge services, activities and classes, parties and events, and so much more!



One Bedroom -  
 One Bath (562 SqFt)



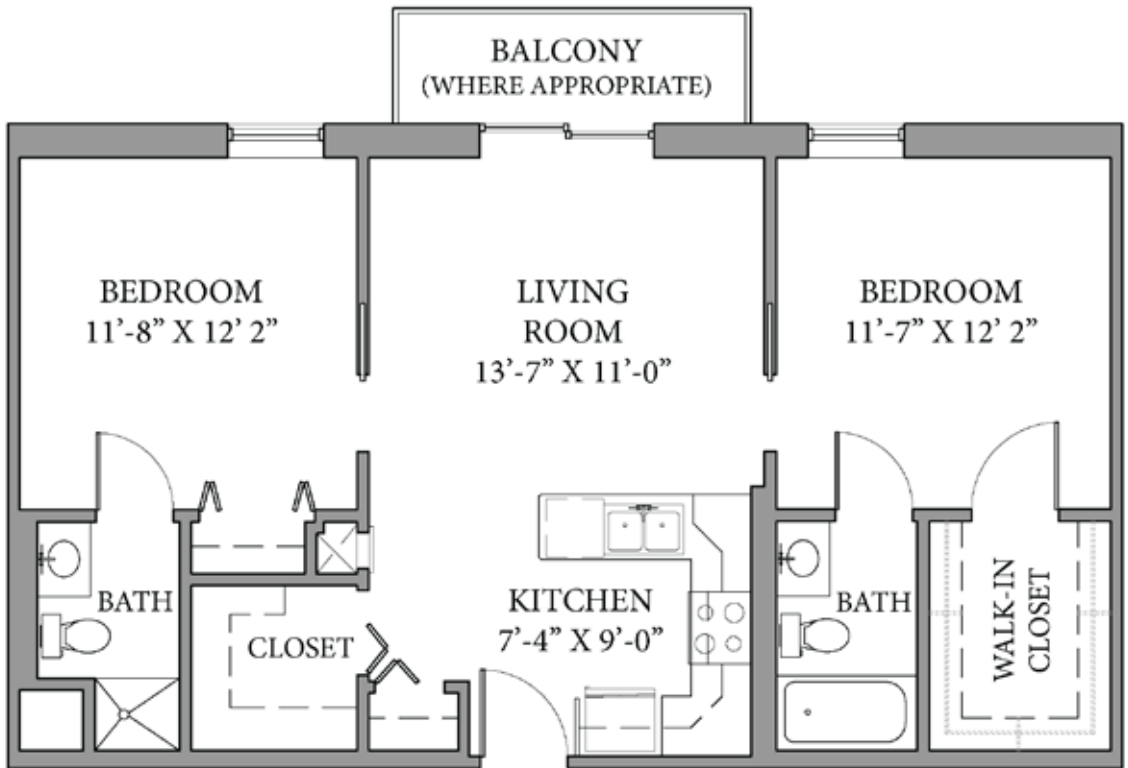


**Expanded One Bedroom -  
One Bath (625 SqFt)**



*A Place  
That Feels  
Like Home*

Two Bedroom -  
Two Bath (825 SqFt)

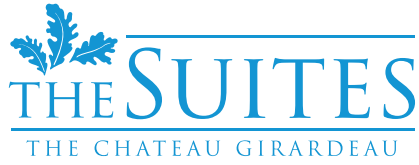


**Expanded Two  
Bedroom - Two Bath  
(1,145 SqFt)**



*Retirement,  
Just the Way  
You Imagined*





<i>Residence</i>	<i>Guaranteed Lifetime Care Contract</i>	<i>50% Refundable Agreement</i>	<i>Monthly Service Fee*</i>	<i>Lease*</i>
1 Bedroom	\$81,585	\$110,140	\$1,895	\$2,395
Expanded 1 Bedroom	\$94,540	\$127,630	\$2,250	\$2,750
2 Bedroom	\$120,590	\$162,795	\$2,895	\$3,395
Expanded 2 Bedroom	\$150,565	\$203,265	\$3,180	-

\*Add \$1,000 for a second occupant

Monthly service fee rates are only applicable to Guaranteed Lifetime Care Contracts and 50% Refundable Agreements

## Notes

---



---



---



---



---



---



---



---



---



---



  
THE SUITES  
THE CHATEAU GIRARDEAU

Enjoy Independent Living in a beautiful, fully customizable apartment, with access to all of The Chateau Girardeau's premium amenities.



"I love having so many choices of good food to eat, plus the option to try new and unusual menus!"

- Gloria M.



**THE TERRACES**  
THE CHATEAU GIRARDEAU

*A little help.  
A lot of  
independence.*

Get a helping hand at The Terraces, The Chateau Girardeau's Assisted Living facility.

At The Terraces, you can live well and maintain your sense of independence while still receiving the help you need.

The Terraces are spacious two-bedroom, one-bedroom, or studio apartments with private bathrooms and access to top-notch amenities.



*The Help You Need.  
When You Need It.*

- 415 – 835 SqFt
- Walk-in showers
- Plenty of storage space
- Housekeeping services
- Flat linen laundry service

Feel confident that you or your loved one is safe with around-the-clock security and 24-hour licensed nursing services.

# Your Chateau.

*Life is Better with a little help  
from your friends.*

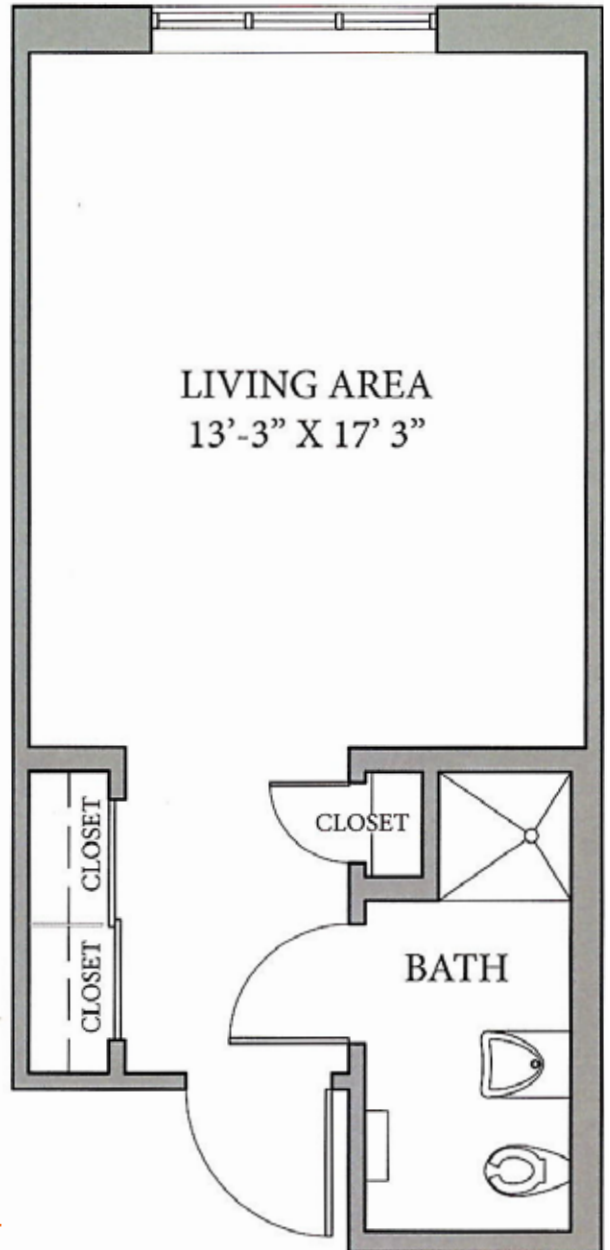


## *Help that empowers, not limits.*

Daily assistance is determined by our residents' individual needs, including help with meals, laundry, bathing, dressing, and medication administration.

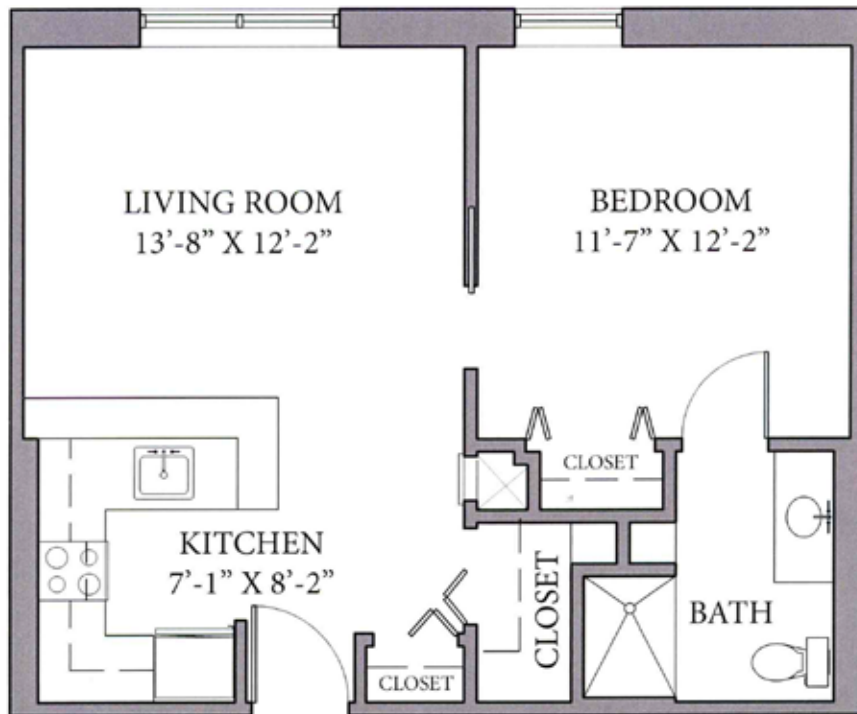
### *On-Campus Amenities Include:*

- Dining options with three well-balanced meals per day
- Daily health and wellness programs
- Transportation services
- On-site beauty and barber shop
- Courtyards and patios
- Daily events and activities



Studio Apartment  
(415 SqFt)

*Every Day,  
Effortlessly Enjoyable*

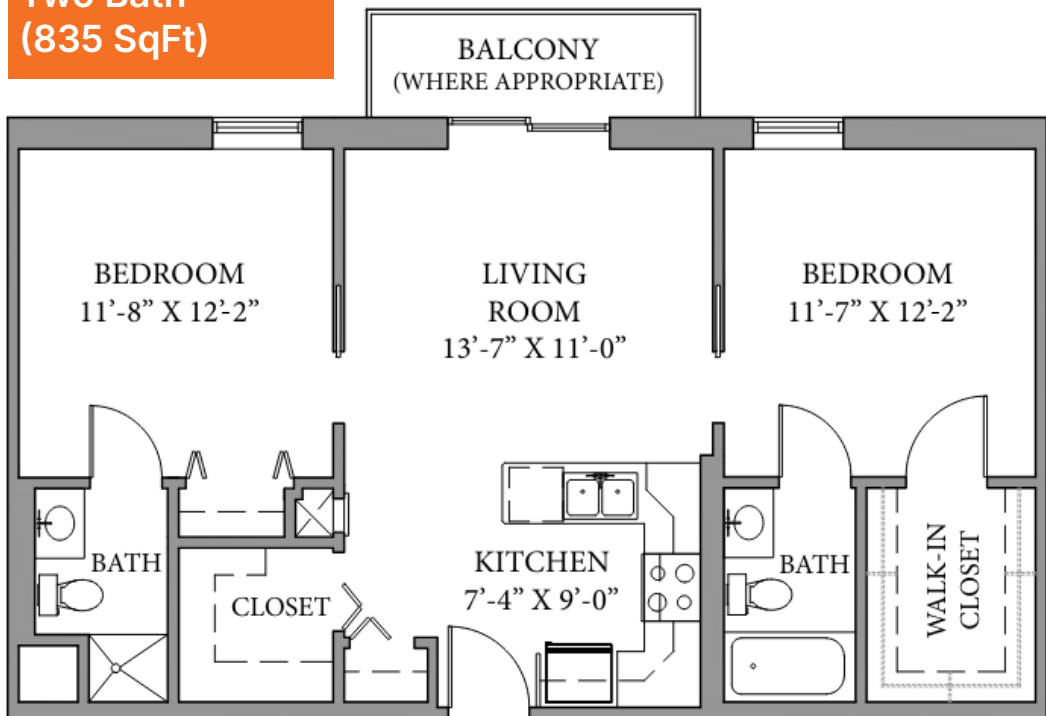


**One Bedroom -  
One Bath  
(570 SqFt)**





**Two Bedroom -  
Two Bath  
(835 SqFt)**





**THE TERRACES**  
THE CHATEAU GIRARDEAU

<i>Residence</i>	<i>Monthly</i>
<b>Studio</b> 1 Occupant: 2 Occupants:	\$4,750 \$5,750
<b>One Bedroom</b> 1 Occupant: 2 Occupants:	\$5,500 \$6,500
<b>Two Bedroom</b> 1 Occupant: 2 Occupants:	\$6,995 \$7,995

Additional \$250 monthly for a furnished apartment

*Notes*

---



---



---



---



---



---



---



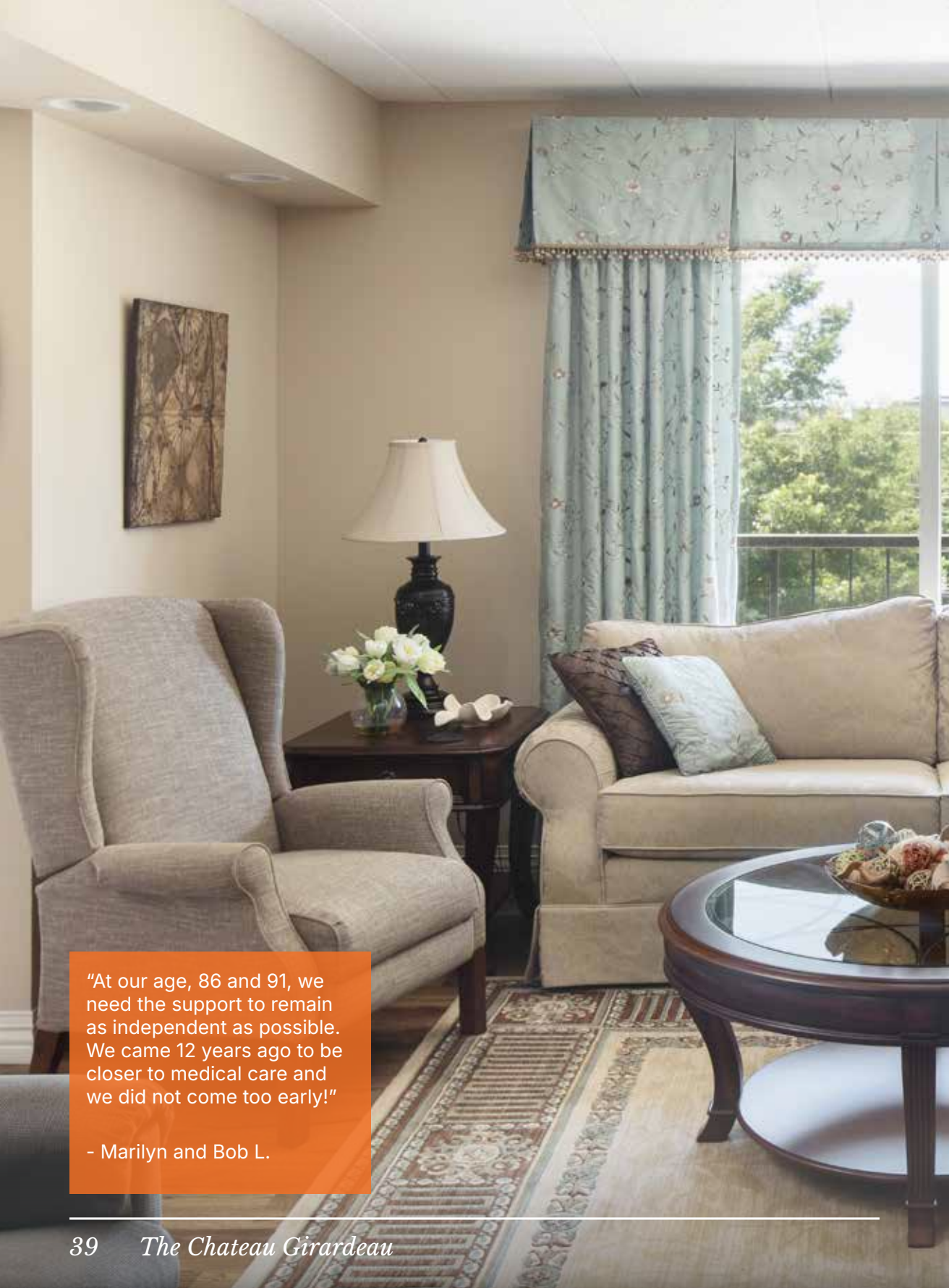
---



---



---



"At our age, 86 and 91, we need the support to remain as independent as possible. We came 12 years ago to be closer to medical care and we did not come too early!"

- Marilyn and Bob L.



  
**THE TERRACES**  
THE CHATEAU GIRARDEAU

Stay independent while getting the assistance you need in a spacious apartment.

*Rest easy at  
The Chateau  
Girardeau's  
premier  
memory care  
facility.*

When you or your loved one stays at The Meadows, you can breathe a sigh of relief knowing we provide everything necessary to live well with memory loss.

Living spaces at The Meadows are spacious studio apartments with private bathrooms, available in single or double occupancy, and designed for both maximum comfort and maximum safety.



*Memory Care. Tailored to You.*

- Individualized care plan management
- 24-hour on-site RN/LPN
- Medication management
- Scheduled housekeeping, laundry, and linen services
- Well-balanced meals and snacks overseen by our on-staff licensed dietician
- Emergency call and wander management systems
- 24-hour security
- Wellness, entertainment, and spiritual activities
- 7,000 SqFt courtyard

## Your Chateau.

*Life is Better when  
it's worry-free.*

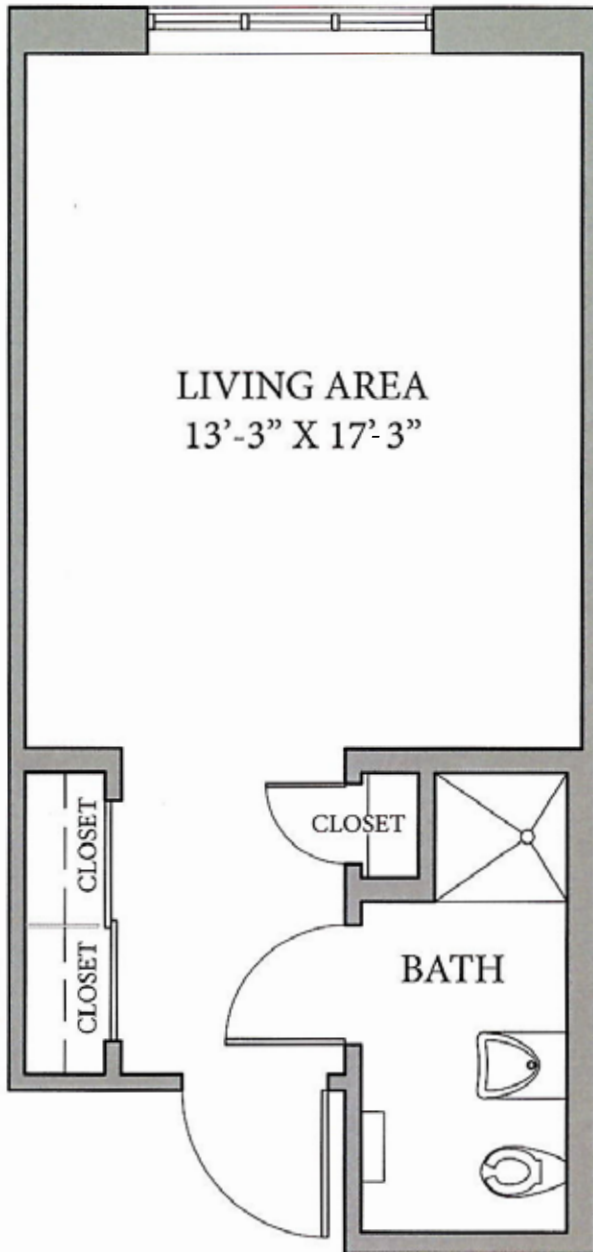


## *Moments that Matter*

The Meadows offers specialized Montessori-based activities that are designed to support individuals through a prepared environment that facilitates engagement while minimizing overstimulation and stress.

Our approach prioritizes strengths rather than limitations, encouraging active participation in daily routines to promote a sense of independence.

Whether you're considering a move from home or a transition from one of our other levels of care, our mission is to make your move to The Meadows smooth and stress-free.



Studio Apartment  
(415 SqFt)





*Live Fully,  
Every Day.*

Let us take care of you at The Gardens, The Chateau Girardeau's long-term nursing and short-term rehabilitation center.

Designed for residents who need nursing care on a daily basis, The Gardens offers private or semi-private rooms with secure outdoor spaces.

Enjoy access to The Chateau Girardeau's amenities, including events and activities, an on-site beauty salon and barber shop, and a chef-directed dining program!



*A home with nursing care.  
Not a nursing home.*

- 24-hour nursing services
- Around-the-clock security
- Medication management
- Dining options with three well-balanced meals per day
- Inpatient and outpatient professional rehabilitation services



*Your Chateau.*  
*Life is Better when your health is  
in good hands.*



## *Connection, Comfort, & Community*

Our state-of-the-art, Medicare-approved facility is conveniently located on The Chateau Girardeau campus, not far from top area hospitals.

Our highly trained, senior-specialized healthcare professionals help you or your loved one live life to the fullest, no matter the need.

Our program has been nationally recognized for patient experience and our collaborative, patient-centric approach that utilizes evidence-based techniques.

Rehab residents are able to stay in one of our private rooms with access to dining amenities, activities, and common areas.

*Skilled Nursing & Rehabilitation*

  
THE GARDENS  
THE CHATEAU GIRARDEAU



“Living at The Chateau has been great because of the safety and security, knowing nurses will answer your call if needed for an emergency.”

- Valerie W.



An aerial photograph of a residential community. In the center, there is a large, multi-story brick apartment building with a dark roof. Below it is a long, single-story building, possibly a clubhouse or community center, surrounded by a well-maintained green lawn. The area is lush with trees, and a paved road with utility poles runs through the scene. The background shows a dense forest and a clear sky.

# *Life is Better Here.*

The Chateau Girardeau is more than just a place. It's an experience — of community, continued independence, and committed support.



SCAN ME


Want to learn more? Our team is happy to answer questions, provide more information, or schedule a private tour!



EQUAL HOUSING  
OPPORTUNITY

3120 Independence St.  
Cape Girardeau, MO 63703  
573.335.1281 | 800.428.0069  
[www.chateaugir.com](http://www.chateaugir.com)



 [facebook.com/ChateauGirardeau/](https://facebook.com/ChateauGirardeau/)

 [@the.chateau.girardeau](https://the.chateau.girardeau)